

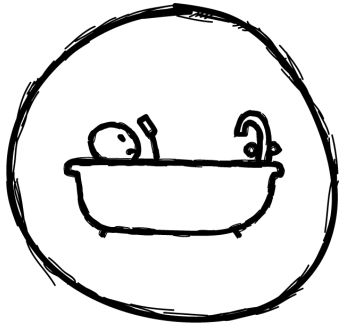
# Social Learning: From data capture to ownership

Ben Betts  
CEO, HT2

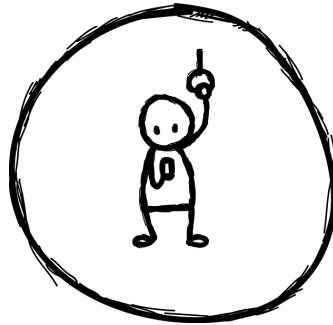


We're to move beyond the course...

To a learning experience design



Sparking



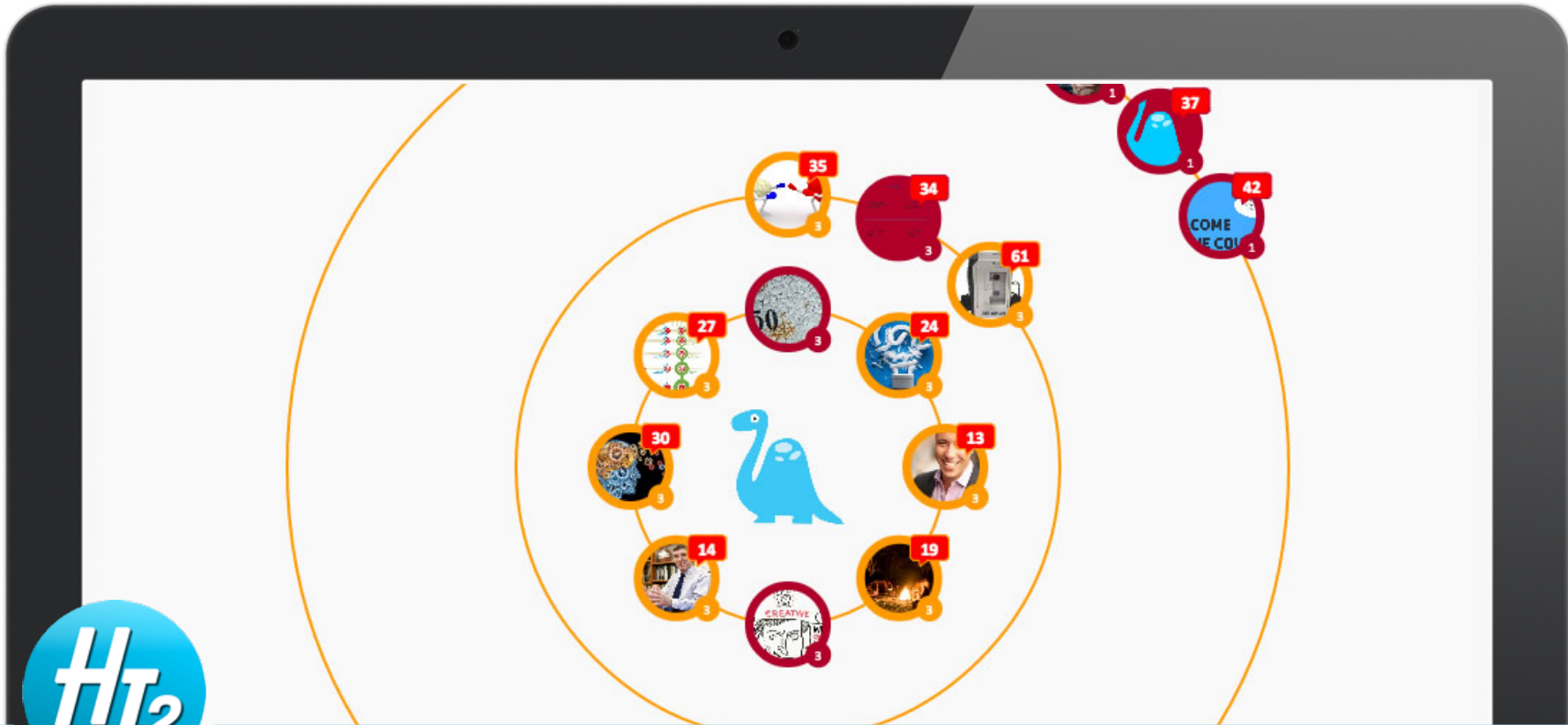
Poking



Proving



# Thought is required



# You can 'design' social

The screenshot displays a user interface for a social design platform. On the left, a sidebar contains navigation icons: an information icon, a speech bubble with '10', and a trophy. The main content area is split into two columns. The left column features a red header 'Maximum XP gained from this object (1/2 XP)', followed by instructions: 'Use this object to contribute links and files that you think demonstrate great innovation Download the document here'. Below this is a red button 'Click to add a new object', two buttons 'Add a link' and 'Upload a file', a text input field containing 'apple.com/watch', and a 'Go!' button. A large image of an Apple Watch is shown below the input field. The right column has a header 'Use this object to contribute links and files that you think demonstrate great innovation'. It includes two dropdown menus: 'Filtered by: All' and 'Sorted by: Created'. Below are two object cards. The first card, 'Apple Watch', has a red border and a red circle with '0' next to its image. The second card, 'Canary Wharf', has a grey border and a red circle with '0' next to its image. Each card contains a title and a short paragraph of text.

**Maximum XP gained from this object (1/2 XP)**

Use this object to contribute links and files that you think demonstrate great innovation Download the document here

**Click to add a new object**

[Add a link](#) [Upload a file](#)

apple.com/watch **Go!**

**Use this object to contribute links and files that you think demonstrate great innovation**

Filtered by: All | Sorted by: Created

**Apple Watch**

To make the best use of its size and location on your wrist, Apple Watch has all-new interactions and technologies. They let you do familiar things more quickly and conveniently. As well as some things that simply weren't possible before. So using it is a whole new experience.

**Canary Wharf**

Innovation can come in many forms, including buildings. When these buildings first emerged in London, they were thought by many to be too different. Today, they represent the new financial centre



# But proof doesn't happen on the LMS



# We're using this to power Open Badges



Path 1

Criteria 1.1  
Complete course 'xyz'

or

Path 2

Criteria 2.1  
Achieve 50 comments in  
course 'xyz'

and

Criteria 2.2  
Achieve 10 upvotes in  
course 'xyz'

HT<sub>2</sub>

Personal > Enterprise > Personal





## Dave Tosh

Currently working on @reachhq, @learning\_locker and a personal version of Learning Locker. Previously @elgg.

Twitter

Github

Medium

Learning on

## Activity Log

```

{
  "actor": {
    "name": "Dave Tosh",
    "mbox": "mailto:dave.tosh@ht2.co.uk",
    "objectType": "Agent"
  },
  "verb": {
    "id": "http://learninglocker.net/verbs/earned",
    "display": {
      "en-US": "earned",
      "en-GB": "earned"
    }
  },
  "authority": {
    "name": "Dave Tosh",
    "mbox": "mailto:dave.tosh@ht2.co.uk",
    "objectType": "Agent"
  },
  "object": {
    "objectType": "Activity",
    "id": "http://teamtrees.com/library/git-basics/working-with-remote-repositories",
    "definition": {
      "name": {
        "en-US": "Working With Remote Repositories",
        "en-GB": "Working With Remote Repositories"
      },
      "type": "http://activitystrea.ms/schema/1.0/badge",
      "extensions": {
        "http://learninglocker.net/xapi/recipe/badges/extensions": {
          "image": "https://wac.A8B5.edgecastcdn.net/80A8B5/achievement-images/badges_DD_Git_Stage5.png"
        }
      }
    }
  },
  "timestamp": "2013-10-31T19:10:40.000Z",
  "stored": "2015-03-21T16:18:01+0000",
}

```







## Dave Tosh

Currently working on @reachhq, @learning\_locker and a personal version of Learning Locker. Previously @elgg.

[Twitter](#)

[LinkedIn](#)

[Github](#)

### Learning on

Treehouse

Curatr

Learning Locker Personal

Youtube

Whatcha learning?

Options ▾

- Write a post
- Upload an image
- Add a video
- Bookmark a link

Publish

## ersion of Curatr

We're just about to start beta testing the next version of Curatr, our Social Learning platform. We update the platform throughout the year (this is the 17th release since September 2013), but this update is more significant. With this release, we'll slay a few sacred cows and introduce a few new features which are the first of their kind to hit the Learning Technology market...

### Evolving the User Interface

Curatr's UI has always been one of our most unique features. Its also been divisive. Our trademark 'circular' layout has somewhat come to define the platform. But Curatr is more than any particular layout. Earlier in the year we got our first opportunity to customise the interface thanks to [TES Global](#). This has led to the development of a new way to view content in Curatr that we're calling the 'Playlist' view:



### Playlist view

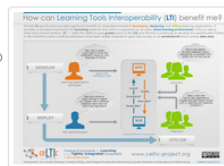
As a course administrator you can now choose between 'Playlist' view and 'Classic' Curatr. It's the flick of a switch to change between interfaces. You can still use the 'Classic' view, if you prefer, or mix and match between the two. We also introduced a modified navigation bar, with a breadcrumb, to help you find your way around a little easier.



[Back to stream](#)

## IMS Global: Learning Tools Interoperability

IMS Global Learning is a nonprofit member organization that strives to enable the growth and impact of learning technology in higher education, K-12, and corporate education worldwide. IMS GLC members are leading corporations, higher education institutions, school districts and government organizations worldwide that are enabling the future of education by collaborating on interoperability standards and major adoption projects for the digital support of education and learning.



On: [Imsglobal](#)

Dave Tosh bookmarked via [Learning Locker Personal](#)

0 Comments

Learning Locker

Login ▾

Recommend

Share

Sort by Best ▾



Be the first to comment.

Subscribe

Add Disqus to your site

Privacy

DISQUS





## Dave Tosh

Currently working on @reachhq, @learning\_locker and a personal version of Learning Locker. Previously @elgg.

Twitter

LinkedIn

GitHub

### Learning on

Treehouse

Curatr

Learning Locker Personal

Youtube

I just completed the Curating your contributions level on the Exploring Social Learning course.



We're taking a social learning approach to learning about social learning. Confusing? We hope and expect that you will contribute your thoughts and discoveries throughout the next four weeks. Some of that will be here on Curatr, some will be on the web. We will use this section to collect and curate your contributions.

Curatr Dave Tosh completed 18 hours ago

Delete

## Course Welcome

An introduction to the course from your hosts Sam Burrough and Martin Couzins. We explain the ideas behind this course, how it works and how you can contribute. (12mins)



Curatr Dave Tosh completed 23 hours ago

Delete

## Objects, Classes, and Variables



**Provider:** Treehouse

**Achieved:** 2014-02-15T16:15:30.000Z



## Settings: integrations



To pull in your course completions and badges earned, add your username. This requires a public profile.



To pull in your course completions and badges earned, add your username. This requires a public profile.



To pull in your courses sync up your Coursera profile.



Pull in your Khan academy courses.





## Dave Tosh

Currently working on @reachhq, @learning\_locker and a personal version of Learning Locker. Previously @elgg.

Twitter

LinkedIn

Github

### Learning on

Treehouse

Curatr

Learning Locker Personal

Youtube

## Summary: Badges

### Objects, Classes, and Variables



Treehouse

### Creating a Website Structure



Treehouse

### Working With Remote Repositories



Treehouse

### Why Version Control Matters



Treehouse

### Merging



Treehouse

### Branches



Treehouse

### Getting Started With Git



Treehouse





## Dave Tosh

Currently working on @reachhq,  
@learning\_locker and a personal version  
of Learning Locker. Previously @elgg.

Twitter

Github

Medium

Learning on

## Activity Log

```
{
  "actor": {
    "name": "Dave Tosh",
    "mbox": "mailto:dave.tosh@ht2.co.uk",
    "objectType": "Agent"
  },
  "verb": {
    "id": "http://learninglocker.net/verbs/earned",
    "display": {
      "en-US": "earned",
      "en-GB": "earned"
    }
  },
  "authority": {
    "name": "Dave Tosh",
    "mbox": "mailto:dave.tosh@ht2.co.uk",
    "objectType": "Agent"
  },
  "object": {
    "objectType": "Activity",
    "id": "http://teamtreehouse.com/library/git-basics/working-with-remote-repositories",
    "definition": {
      "name": {
        "en-US": "Working With Remote Repositories",
        "en-GB": "Working With Remote Repositories"
      },
      "type": "http://activitystrea.ms/schema/1.0/badge",
      "extensions": {
        "http://learninglocker.net/xapi/recipe/badges/extensions": {
          "image": "https://wac.A8B5.edgecastcdn.net/80A8B5/achievement-images/badges_DD_Git_Stage5.png"
        }
      }
    }
  },
  "timestamp": "2013-10-31T19:10:40.000Z",
  "stored": "2015-03-21T16:18:01+0000",
}
```



Can you guys help?

Could do with input and assistance...

It feels like there is more latent demand in academia for this right now.

We need testers, pilots and roadmap input.

